

*Located in
Beaumont Centre*

- 2,529 +/- SF available
- Zoned P-1
- Located at Harrodsburg & New Circle Roads. Convenient access to downtown, hospitals & minutes from Blue Grass Airport
- Ample parking
- Hotels, restaurants, shopping, YMCA, Moondance Amphitheater and more within walking distance

\$19.50/SF
Full Service



*Click here to connect
to our website*

For More Information Contact:

Tim Haymaker

859-685-3022 Office

859-338-8500 Cell

thaymaker@haymakercompany.com

Steve Bean

859-685-3027 Office

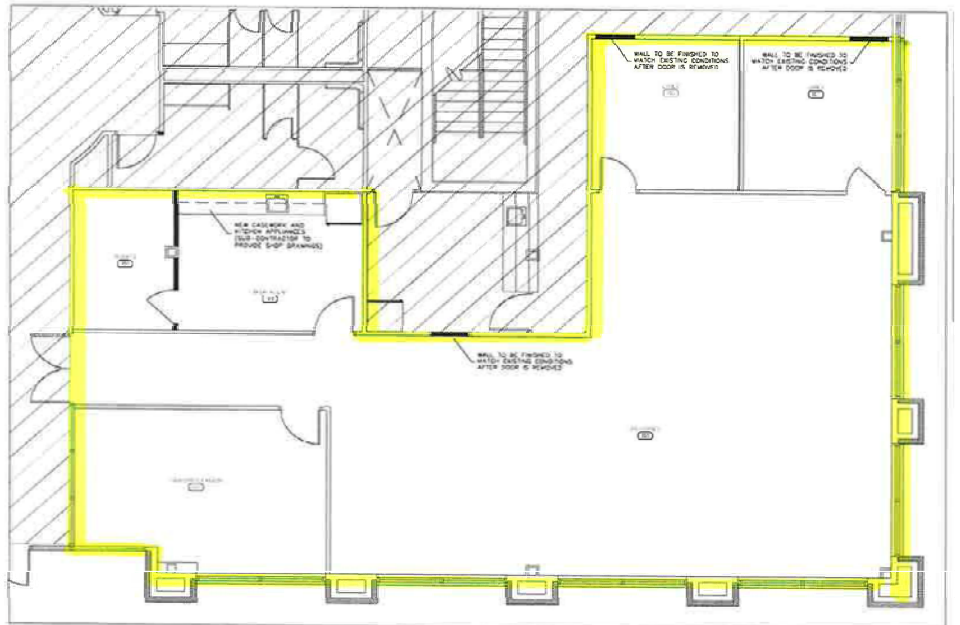
859-333-6088 Cell

sbean@haymakercompany.com

3120 WALL STREET

Lexington, KY

FOR LEASE First Floor Location



HB HAYMAKER/BEAN
commercial real estate

www.haymakerbean.com

